

Tubular-System EOAT Baseframes

**EOAT connectors in milled design
for highest dynamic loads.**

RVG / Connector for Base-Plate GPM

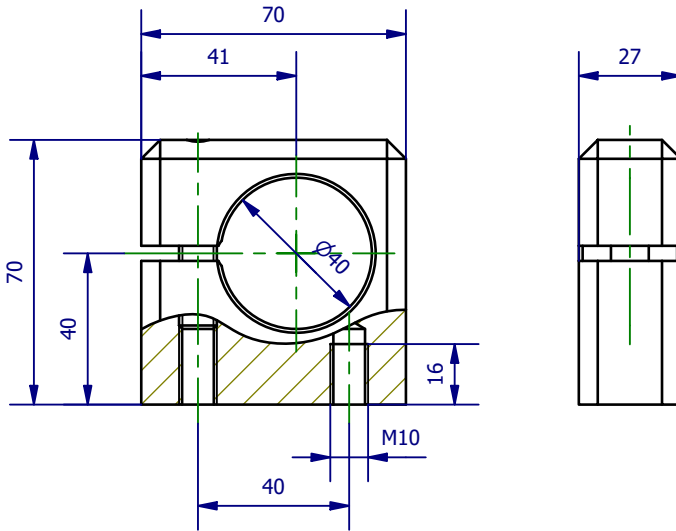


Remarks:

- for connecting round tube profiles to GPM base plates

Scope of Delivery:

- clamping screw included
- mounting screws for base plate not included; screws of strength class at least 10.9 are recommended

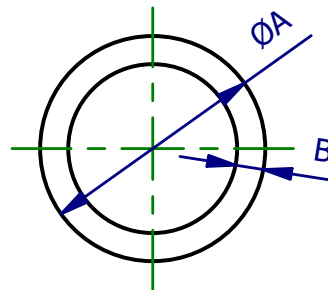
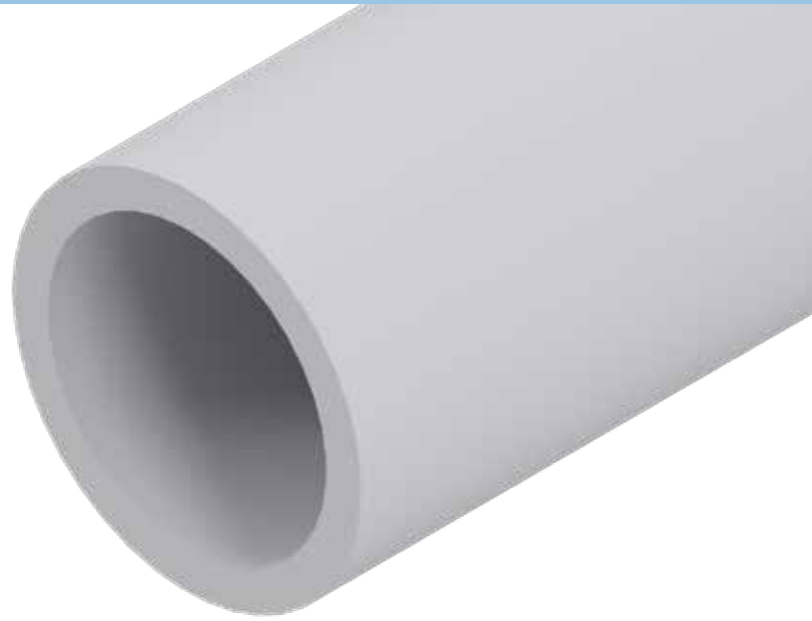


Part No.	Description	Material	Weight [g]
3-020-40-00	RVG 40 Connector Ø40, for Base-Plate GPM	Aluminium	260

R-Profile / Tubular-System

Remarks:

- for the construction of grippers in round tube design
- minimum length of the round tube profiles 50 mm
- special lengths over 2000 mm on request



Part No.	Description		A [mm]	B [mm]	Länge [mm]	Werkstoff	Weight [g]
3-050-20-01	R 20-2,5-1000	R-Profile Ø20, wall thickness 2,5	20	2.5	1000	Al	390
3-050-20-02	R 20-2,5-2000	R-Profile Ø20, wall thickness 2,5	20	2.5	2000	Al	780
3-050-20-06	R 20-2,5-0001	R-Profile Ø20, wall thickness 2,5	20	2.5	1	Al	0.39
3-050-25-01	R 25-5-1000	R-Profile Ø25, wall thickness 5	25	5	1000	Al	885
3-050-25-02	R 25-5-2000	R-Profile Ø25, wall thickness 5	25	5	2000	Al	1770
3-050-25-06	R 25-5-0001	R-Profile Ø25, wall thickness 5	25	5	1	Al	0.89
3-050-30-01	R 30-3-1000	R-Profile Ø30, wall thickness 3	30	3	1000	Al	710
3-050-30-02	R 30-3-2000	R-Profile Ø30, wall thickness 3	30	3	2000	Al	1420
3-050-30-06	R 30-3-0001	R-Profile Ø30, wall thickness 3	30	3	1	Al	0.71
3-050-40-01	R 40-4-1000	R-Profile Ø40, wall thickness 4	40	4	1000	Al	1270
3-050-40-02	R 40-4-2000	R-Profile Ø40, wall thickness 4	40	4	2000	Al	2540
3-050-40-06	R 40-4-0001	R-Profile Ø40, wall thickness 4	40	4	1	Al	1.27

000
Quick Change System

050
Profile-Channel Nut

100
Clamps

115
Tubular Clamps

120
Profile Connectors

190
Accessories-Profile

200
Vacuum Cup-Connectors

220
Vacuum Cups

224
Vacuum Cups-Special

230
Manifold

290
Adapter

300
Gripper Arms

400
Grippers

450
Gripper Fingers

600
Nipper Bodies

610
Nipper Blades

700
Special Elements

800
Electric and Sensors

850
Pneumatic

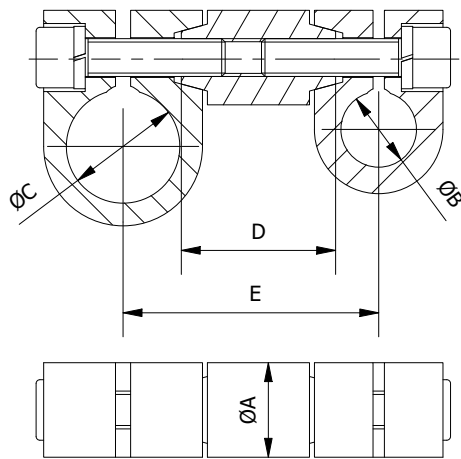
990
Other PA-Forming

RV 2 / Double-Connector, round



Remarks:

- universally applicable round connector with clamping on both sides
- for connecting various round tube elements with each other to mount a tubular base frame
- allows the connection of the round tube construction kit with gripper elements from the ASS robot hand construction kit which have a clamping diameter of 20 or 30 mm

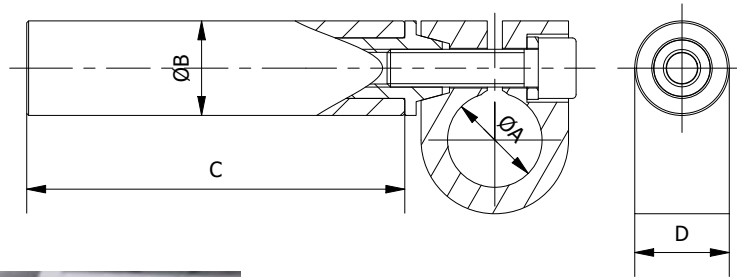


Part No.	Description	A [mm]	B [mm]	C [mm]	D [mm]	E [mm]	Material	Weight [g]
3-104-01-00	RV 2-25-25-25-40	25	25	25	40	69	Aluminium	237
3-104-02-00	RV 2-25-20-30-40	25	20	30	40	68	Aluminium	241
3-104-03-00	RV 2-25-20-25-40	25	20	25	40	66	Aluminium	231
3-104-11-00	RV 2-25-20-25-66	25	20	25	66	92	Aluminium	264
3-104-12-00	RV 2-25-20-40-66	25	20	40	66	100	Aluminium	317
3-104-13-00	RV 2-25-40-40-66	25	40	40	66	111	Aluminium	376

RV 1 / Connector, round

Remarks:

- universally applicable connector to continue building e.g. from RV 2
- alternatively, a WKA angle arm or a GLA articulated gripper arm can also be used for an RV 2 with clamping diameters of 20 or 30 mm, e.g. see photo



Part No.	Description	A [mm]	B [mm]	C [mm]	D [mm]	Material	Weight [g]
3-103-03-00	RV 1-25-20-100	20	25	100	25	Aluminium	194
3-103-06-00	RV 1-25-20-200	20	25	200	25	Aluminium	280
3-103-09-00	RV 1-25-20-300	20	25	300	25	Aluminium	366
3-103-12-00	RV 1-25-25-100	25	25	100	25	Aluminium	200
3-103-15-00	RV 1-25-25-200	25	25	200	25	Aluminium	286
3-103-18-00	RV 1-25-25-300	25	25	300	25	Aluminium	372
3-103-21-00	RV 1-25-30-100	30	25	100	25	Aluminium	210
3-103-24-00	RV 1-25-30-200	30	25	200	25	Aluminium	296
3-103-27-00	RV 1-25-30-300	30	25	300	25	Aluminium	382
3-103-30-00	RV 1-25-40-100	40	25	100	25	Aluminium	253
3-103-33-00	RV 1-25-40-200	40	25	200	25	Aluminium	339
3-103-36-00	RV 1-25-40-300	40	25	300	25	Aluminium	425

000
Quick Change System

050
Profile-Channel Nut

100
Clamps

115
Tubular Clamps

120
Profile Connectors

190
Accessories-Profile

200
Vacuum Cup-Connectors

220
Vacuum Cups

224
Vacuum Cups-Special

230
Manifold

290
Adapter

300
Gripper Arms

400
Grippers

450
Gripper Fingers

600
Nipper Bodies

610
Nipper Blades

700
Special Elements

800
Electric and Sensors

850
Pneumatic

990
Other PA-Forming

VLK 1 / Extension, single-cone

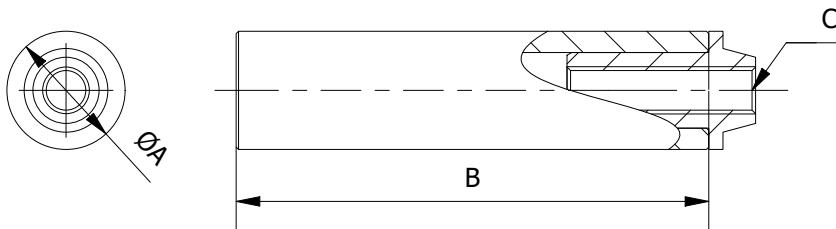


Remarks:

- for assembling individual Round-Connectors RV 1

Accessories e.g.:

- RK K / Mounting Adapter cone



Part No.	Description	A [mm]	B [mm]	C [mm]	Material	Weight [g]
3-100-10-00	VLK 1 25-100 Extension, single-cone, Ø25, length 100	25	100	M10	Al	100
3-100-20-00	VLK 1 25-200 Extension, single-cone, Ø25, length 200	25	200	M10	Al	186
3-100-30-00	VLK 1 25-300 Extension, single-cone, Ø25, length 300	25	300	M10	Al	272

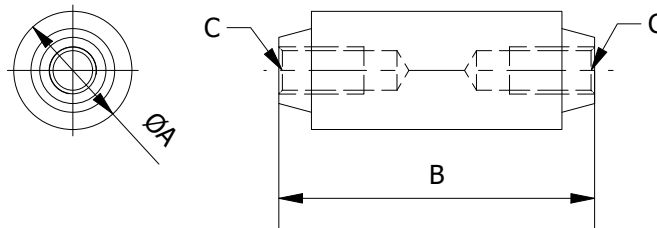
VLK 2 / Extension, double-cone

Remarks:

- for assembling individual Round-Connectors RV 2

Accessories e.g.:

- RK K / Mounting Adapter cone



Part No.	Description	A [mm]	B [mm]	C [mm]	Material	Weight [g]
3-102-27-01	VLK 2 25-40 Extension, double-cone, Ø25, distance 40	25	40	M10	Aluminium	37
3-102-53-01	VLK 2 25-66 Extension, double-cone, Ø25, distance 66	25	66	M10	Aluminium	70

000
Quick Change System

050
Profile-Channel Nut

100
Clamps

115
Tubular Clamps

120
Profile Connectors

190
Accessories-Profile

200
Vacuum Cup-Connectors

220
Vacuum Cups

224
Vacuum Cups-Special

230
Manifold

290
Adapter

300
Gripper Arms

400
Grippers

450
Gripper Fingers

600
Nipper Bodies

610
Nipper Blades

700
Special Elements

800
Electric and Sensors

850
Pneumatic

990
Other PA-Forming

RK K / Mounting Adapter Cone



Remarks:

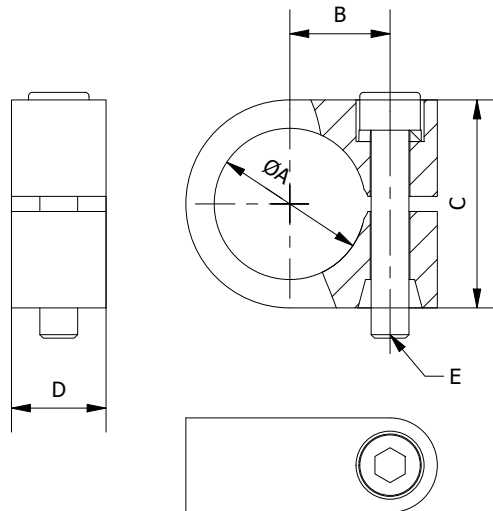
- for assembling individual Round-Connectors RV 1 or RV 2

Scope of Delivery:

- mounting material included

Accessories e.g.:

- VLK 1 / Extension, single-cone
- VLK 2 / Extension, double-cone



Part No.	Description	A [mm]	B [mm]	C [mm]	D [mm]	E [m]	Material Weight [g]
3-101-20-00	RK K25-20 Mounting Adapter cone25, clamping Ø20	20	19	34	25	M10	Al 94
3-101-25-00	RK K25-25 Mounting Adapter cone25, clamping Ø25	25	19	39	25	M10	Al 100
3-101-30-00	RK K25-30 Mounting Adapter cone25, clamping Ø30	30	23.5	42	25	M10	Al 110
3-101-40-00	RK K25-40 Mounting Adapter cone25, clamping Ø40	40	26.5	55	25	M10	Al 153

RKN K / Mounting Adapter for VLK

Remarks:

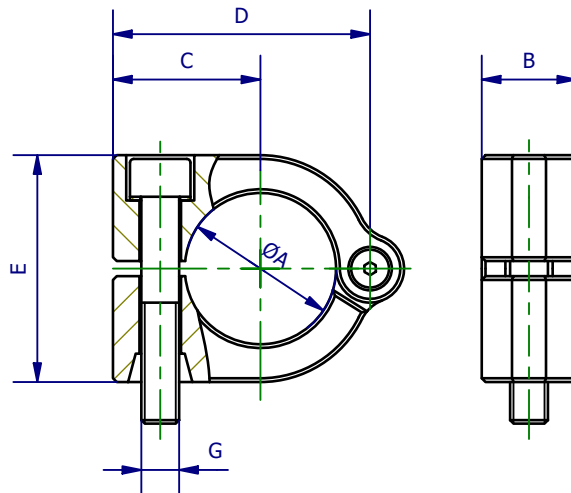
- for subsequent expansion of the EOAT
- no disassembly necessary
- clamping piece is attached to the tubular gripper and then the desired VLK 1 or VLK 2 is mounted

Scope of Delivery:

- mounting material included

Accessories e.g.:

- VLK 1 / Extension, single-cone
- VLK 2 / Extension, double-cone



Part No.	Description	A [mm]	B [mm]	C [mm]	D [mm]	E [mm]	G [mm]	Material	Weight [g]
3-107-25-00	RKN K25-25	25	25	33	55.5	48	M10	Aluminium	159
3-107-40-00	RKN K25-40	40	25	39	68	60	M10	Aluminium	191

000
Quick Change System

050
Profile-Channel Nut

100
Clamps

115
Tubular Clamps

120
Profile Connectors

190
Accessories-Profile

200
Vacuum Cup-Connectors

220
Vacuum Cups

224
Vacuum Cups-Special

230
Manifold

290
Adapter

300
Gripper Arms

400
Grippers

450
Gripper Fingers

600
Nipper Bodies

610
Nipper Blades

700
Special Elements

800
Electric and Sensors

850
Pneumatic

990
Other PA-Forming

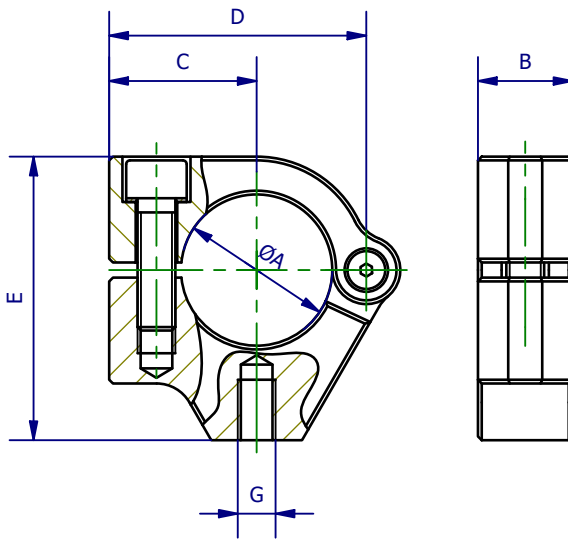
RKN G / Mounting Adapter for panels

Remarks:

- for mounting tubular systems e.g. to plates

Scope of Delivery:

- mounting material included



Part No.	Description	A [mm]	B [mm]	C [mm]	D [mm]	E [mm]	G [mm]	Material	Weight [g]
3-108-25-00	RKN G8-25	25	25	33	55.5	60	M8	Aluminium	174
3-108-40-00	RKN G10-40	40	25	39	68	75	M10	Aluminium	225

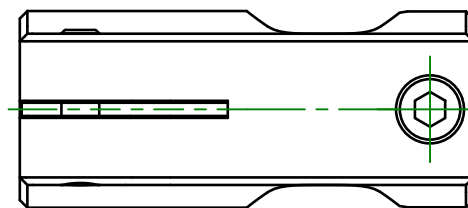
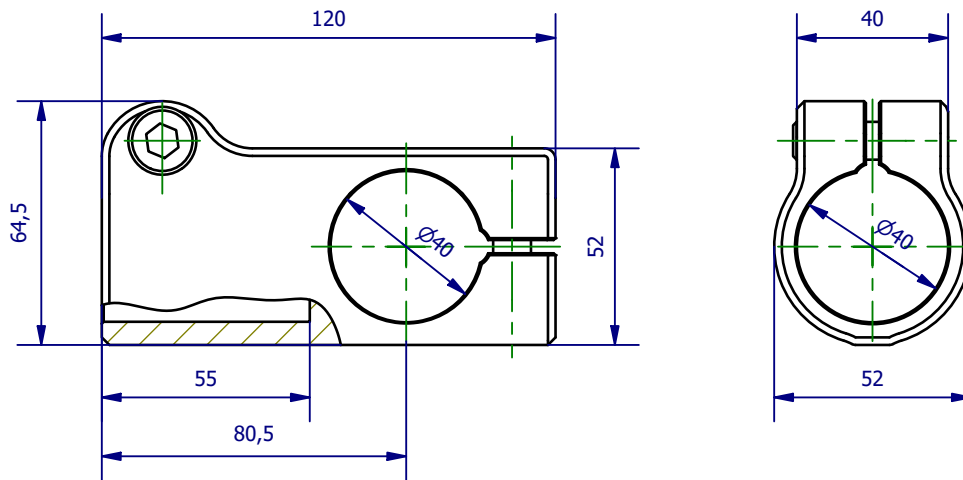
RKT / Connector, round, T-style

Remarks:

- for connecting tubular profiles at an angle of 90°
- T-style: one profile is attached to the head side, the other side can be pushed through
- no additional work such as drilling or thread cutting required

Scope of Delivery:

- mounting material included



Part No.	Description	Material	Weight [g]
3-120-40-00	RKT 40	Aluminium	413

000
Quick Change System

050
Profile-Channel Nut

100
Clamps

115
Tubular Clamps

120
Profile Connectors

190
Accessories-Profile

200
Vacuum Cup-Connectors

220
Vacuum Cups

224
Vacuum Cups-Special

230
Manifold

290
Adapter

300
Gripper Arms

400
Grippers

450
Gripper Fingers

600
Nipper Bodies

610
Nipper Blades

700
Special Elements

800
Electric and Sensors

850
Pneumatic

990
Other PA-Forming

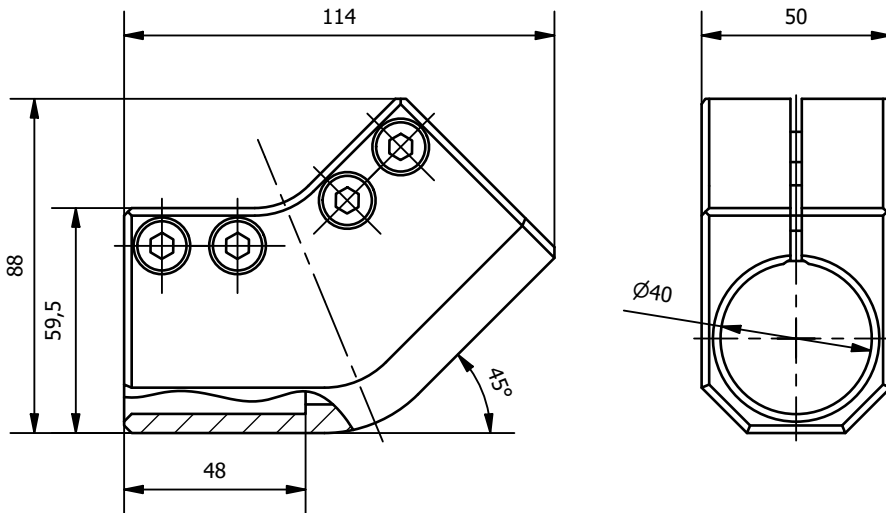
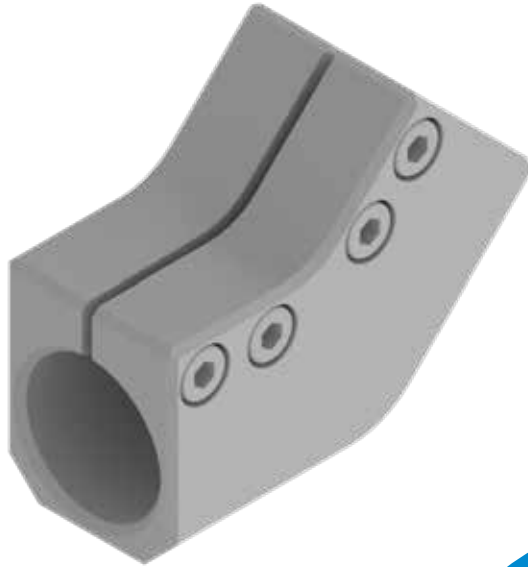
RKW / Connector, round, angle 45°

Remarks:

- for connecting tubular profiles at an angle of 45°
- no additional work such as drilling or thread cutting required

Scope of Delivery:

- mounting material included

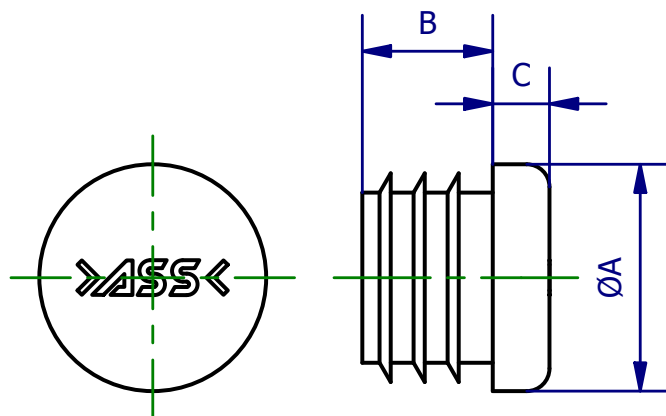


Part No.	Description	Material	Weight [g]
3-121-40-00	RKW 45-40 Connector, round, angle 45°, Ø40	Aluminium	508

ADK R / Profile End Cap, round

Remarks:

- for closing tubular profile ends
- holes for holding the tread caps should be deburred
- caps are simply inserted with a rubber hammer



Part No.	Description	A [mm]	B [mm]	C [mm]	Material	Weight [g]
3-190-20-00	ADK R 20 Profile End Cap, round Ø20	20	11.5	5	Plastics	1
3-190-25-00	ADK R 25 Profile End Cap, round Ø25	25	11.5	5	Plastics	3
3-190-30-00	ADK R 30 Profile End Cap, round Ø30	30	11.5	5	Plastics	4
3-190-40-00	ADK R 40 Profile End Cap, round Ø40	40	11.5	5	Plastics	5

000
Quick Change System

050
Profile-Channel Nut

100
Clamps

115
Tubular Clamps

120
Profile Connectors

190
Accessories-Profile

200
Vacuum Cup-Connectors

220
Vacuum Cups

224
Vacuum Cups-Special

230
Manifold

290
Adapter

300
Gripper Arms

400
Grippers

450
Gripper Fingers

600
Nipper Bodies

610
Nipper Blades

700
Special Elements

800
Electric and Sensors

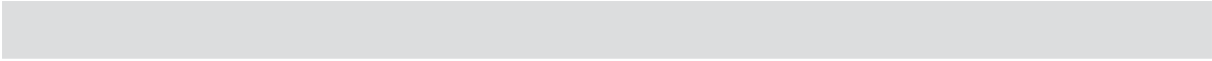
850
Pneumatic

990
Other PA-Forming

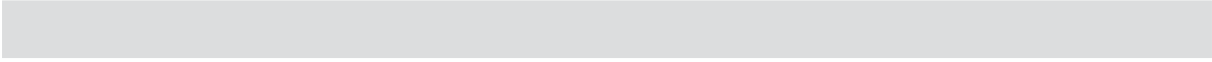
000
Quick Change
System

Tubular System

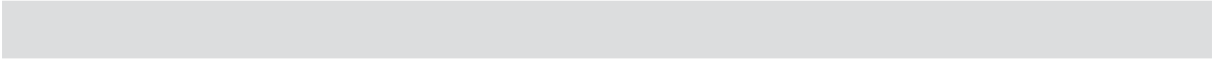
050
Profile-Channel
Nut



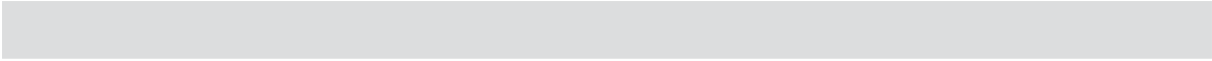
100
Clamps



115
Tubular Clamps



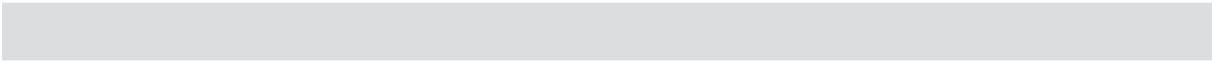
120
Profile
Connectors



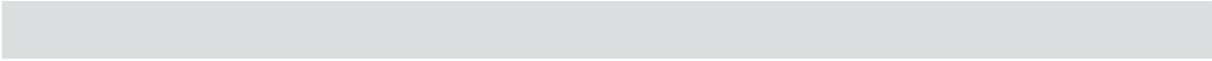
190
Accessories-
Profile



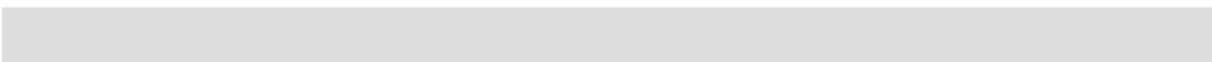
200
Vacuum Cup-
Connectors



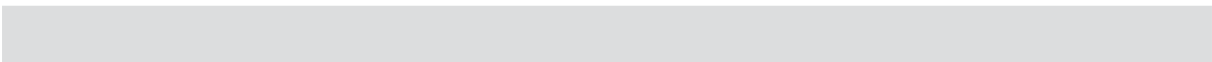
220
Vacuum Cups



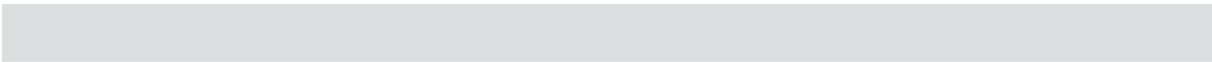
224
Vacuum
Cups-Special



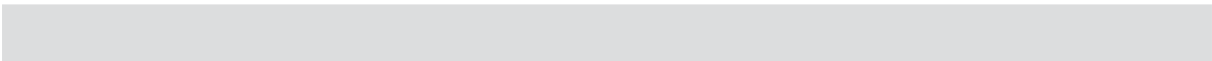
230
Manifold



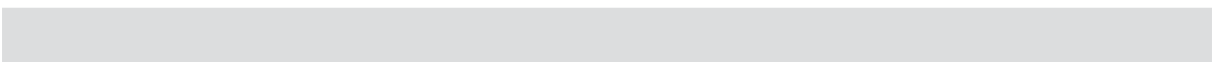
290
Adapter



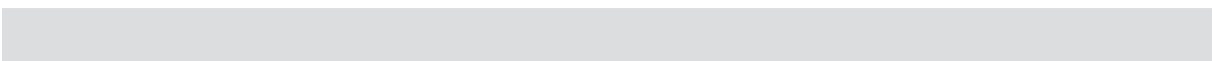
300
Gripper Arms



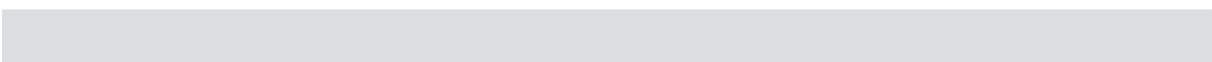
400
Grippers



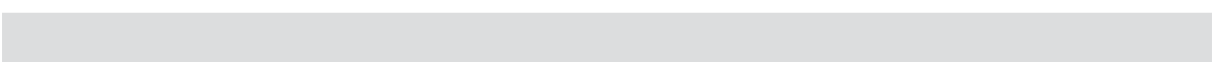
450
Gripper Fingers



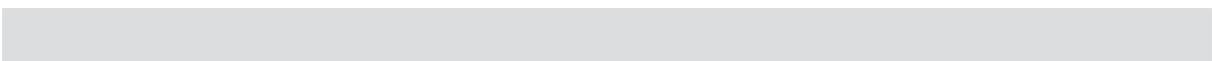
600
Nipper Bodies



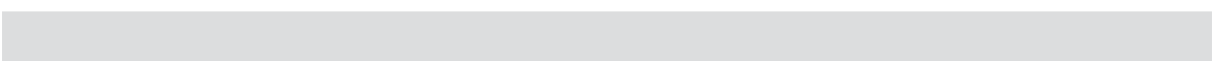
610
Nipper Blades



700
Special
Elements



800
Electric and
Sensors



850
Pneumatic

990
Other
PA-Forming



000
Quick Change
System

050
Profile-Channel
Nut

100
Clamps

115
Tubular Clamps

120
Profile
Connectors

190
Accessories-
Profile

200
Vacuum Cup-
Connectors

220
Vacuum Cups

224
Vacuum
Cups-Special

230
Manifold

290
Adapter

300
Gripper Arms

400
Grippers

450
Gripper Fingers

600
Nipper Bodies

610
Nipper Blades

700
Special
Elements

800
Electric and
Sensors

850
Pneumatic

990
Other
PA-Forming

ROBOTHANDKIT ROBOTICTOOLING AUTOMATIONSYSTEMS



GRIP THE
GREEN TURN.

CO₂ NEUTRAL PRODUCTION

ASS Maschinenbau GmbH

Klef 2
51491 Overath
Germany
Telephone +49 2206 90547-0
Telefax +49 2206 90547-91
www.ass-automation.com
info@ass-maschinenbau.de