

September 2022, Kottlingbrunn/Austria

PRESS RELEASE

WITTMANN BATTENFELD at the K 2022

IMAGOxt – Measuring the advantages

The impact of energy costs in production has dramatically come to the fore with the rising prices of primary energy sources, in particular gas and electricity. This has prompted plastic processors to pay even closer attention to energy consumption and to take the energy efficiency of machinery and equipment more strongly into account in their investment decision making.

Last year WITTMANN Digital, the software division for business information of the WITTMANN Group responsible for the MES solution TEMI+, added the software package IMAGOxt to its product portfolio. IMAGOxt allows companies to measure and visualize multiple variables and process parameters of the equipment, including power consumption.

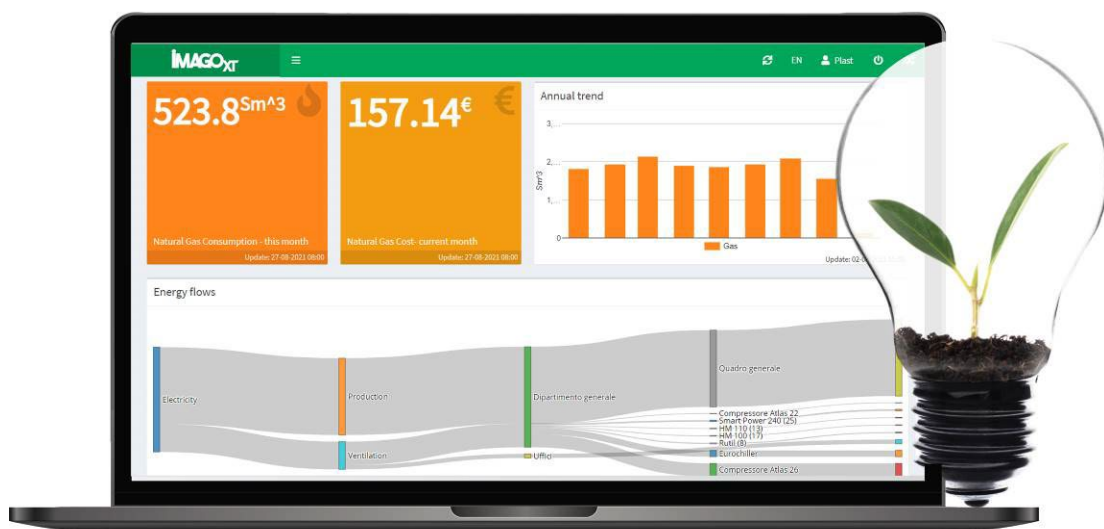


Fig. 1: IMAGOxt interface

By measuring the consumption of various injection molding machines in real production environments over a long period of time, valuable experience was gained on the efficiency of machine models from different suppliers under numerous

applications. At the K 2022, visitors of the WITTMANN BATTENFELD booth in hall 15, booth C06 will not only have the opportunity to get to know the versatile IMAGOxt energy tool, but also to carry out a simulation based on the collected data to help them understand the costs to be expected for energy consumption. In addition, the potential savings in terms of energy and carbon footprint which could be achieved by selecting injection molding machines from the WITTMANN product portfolio will be calculated and displayed.

For the simulation, IMAGOxt links the energy data from the power meters installed on all the machines present at the WITTMANN BATTENFELD booth in real time with the determined measurement results from the system's internal database.



Fig. 2: Energy Cost and Savings simulator

The results will provide a realistic estimate of the economic and environmental advantages molders can achieve by selecting the most energy efficient machinery for each particular application. Especially in times of rising energy costs, knowledge of the impact made by specific applications on the energy bill is of invaluable importance.

The WITTMANN Group

The WITTMANN Group is a globally leading manufacturer of injection molding machines, robots and auxiliary equipment for processing a great variety of plasticizable materials – both plastic and non-plastic. The group of companies has its headquarters in Vienna, Austria and consists of two main divisions: WITTMANN BATTENFELD and WITTMANN. Following the principles of environmental protection, conservation of resources and circular economy, the WITTMANN Group engages in state-of-the-art process technology for maximum energy efficiency in injection molding, and in processing standard materials and materials with a high content of recyclates and renewable raw materials. The products of the WITTMANN Group are designed for horizontal and vertical integration into a Smart Factory and can be interlinked to form an intelligent production cell.

The companies of the group jointly operate eight production plants in five countries, and the additional sales companies at their 34 different locations are present in all major industrial markets around the world.

WITTMANN BATTENFELD pursues the continued strengthening of its market position as a manufacturer of injection molding machines and supplier of comprehensive modern machine technology in modular design. The product range of WITTMANN includes robots and automation systems, material handling systems, dryers, gravimetric and volumetric blenders, granulators, temperature controllers and chillers. The combination of the individual areas under the umbrella of the WITTMANN Group enables perfect integration – to the advantage of injection molding processors with an increasing demand for seamless interlocking of processing machines, automation and auxiliaries.

Contact:

WITTMANN BATTENFELD GmbH

Wiener Neustädter Straße 81

2542 Kottlingbrunn, Austria

Tel.: +43 2252 404-1400

gabriele.hopf@wittmann-group.com

www.wittmann-group.com