

NEWS RELEASE

[Witt-NR-01-2015_QuickLook-App]

February 12th, 2015

Simple machine and robot status requests

The **WiBa QuickLook** app from WITTMANN BATTENFELD provides a very simple and comfortable way to check the status of injection molding machines and robots via Smartphone.



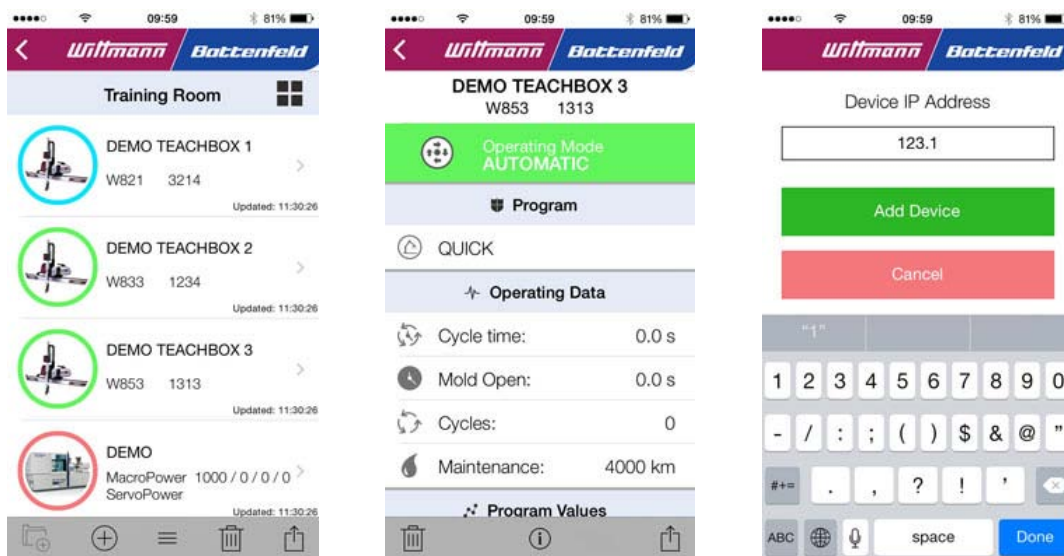
WiBa QuickLook app, now available free of charge from the Apple App Store or from Google Play.

A status request on injection molding machines from WITTMANN BATTENFELD and on WITTMANN robots is now possible via Smartphone easily and at any time. The **WiBa QuickLook** app developed for this purpose is available free of charge from now on via the Apple iOS App Store and via Google Play as an Android app for the corresponding mobile terminals.

The new app links up in each case with the latest software versions of WITTMANN **R8.3** robots and WITTMANN BATTENFELD **UNILOG B6** control systems. In this way, the production data and condition of the most important equipment operating in a given production cell can be checked quickly and easily with the help of **WiBa QuickLook**.

Prerequisites for the use of **WiBa QuickLook** are the software versions 8.21.00 for **R8** robot control systems and V07.2 for **UNILOG B6** machine control systems. Furthermore, the connection of the control systems to the WIFI system of the injection molding plant must be ensured, so that the robots and processing machines can be reached by the app. Depending on the model, the minimum requirement for the Smartphone itself is the installation of either iOS 7 or Android 4.

The functions of *WiBa QuickLook*



Left picture: List view; the status colors are identical with the LED colors of the WITTMANN W8 pro appliances; green stands for automatic operation, blue for non-automatic operation and red for safety criteria not complied with.

Picture in the middle: Overview page on calling up an appliance in the automatic operation mode.

Right picture: Addition of a new appliance; entry of an IP address.

The volume of information which *WiBa QuickLook* app users can access has been deliberately kept manageable. Users carrying out a check will be given a quick, well-founded overview of the most important current parameter settings in a given production cell – those which concern the injection molding machine and any one or several robots involved. To retrieve special details or to adjust parameter settings in the equipment, users are still required to go directly to the relevant processing machines and handling devices.

Of course, special care has also been taken to make handling of the app extremely user-friendly. Color-coded operating states in the lists of equipment give a quick overview. The close-up views for the individual components provide access to the production data, alarms (if any), and user-defined program values. Several components can be grouped for a screen view, and the lists of equipment can be sorted manually. The grid view available as an alternative offers the option to sort the components automatically according to status.

The functions of the *WiBa QuickLook* app make it easy to add components by simply entering their IP addresses. And, last but not least, the settings of equipment shown by the app can be very easily passed on to third parties simply by using the email function of the Smartphone.

App DOWNLOAD:

<http://service.de.wittmann-group.com/app/>

The WITTMANN Group is a worldwide leader in the manufacturing of injection molding machines, robots and peripheral equipment for the plastics industry. Headquartered in Vienna/Austria, the WITTMANN Group consists of two main divisions, WITTMANN BATTENFELD and WITTMANN, which operate 10 production facilities in 7 countries, including 30 direct subsidiary offices located in all major plastics markets around the world.

WITTMANN BATTENFELD focuses on the independent market growth in the manufacturing of state-of-the-art injection molding machines and process technology, providing a modern and comprehensive range of machinery in a modular design that meets the actual and future requirements of the plastic injection molding market.

WITTMANN's product range includes robots and automation systems, material handling systems, dryers, gravimetric and volumetric blenders, granulators, mold temperature controllers and chillers. With this comprehensive range of peripheral equipment, WITTMANN can provide plastics processors with solutions that cover all production requirements, ranging from autonomous work cells to integrated plant-wide systems.

The syndication of the WITTMANN Group has led to connectivity between all product lines, providing the advantage plastics processors have been looking for in terms of a seamless integration of injection molding machines, automation and auxiliary equipment – all occurring at a progressive rate.

Contact:

WITTMANN Robot Systeme GmbH

Am Tower 2

90475 Nuremberg

GERMANY

Tel.: +49 9128 7099-0

Fax: +49 9128 7099-500

info.de@wittmann-group.com

www.wittmann-group.com